

# 检测报告 Test Report

报告编号 SCL01I061807003E  
Report No. SCL01I061807003E

第 1 页 共 6 页  
Page 1 of 6

申请单位 南雄市瑞晟化学工业有限公司  
Applicant NANXIONG RISING CHEMICAL INDUSTRY CO.,LTD.  
地 址 南雄市珠玑工业园平安2路东2号  
Address NO.2,PINGAN EAST ROAD 2,ZHUJI TNDUSTRIAL PARK,NANXIONG  
CITY,GUANGDONG PROVINCE,P.R.CHINA.

以下测试之样品及样品信息由申请者提供并确认  
The following sample(s) and sample information was/were submitted and identified by/on the behalf of the client

样品名称 聚氨酯丙烯酸酯  
Sample Name 聚氨酯丙烯酸酯  
客户参考信息 (RU-607B、RU-607B-90、RU-605B、RU-6091、RU-8090、RU-6100B、RU-6102B、RU-6103B、RU-6104B、RU-6106B、RU-6107B、RU-6108B、RU-6109B、RU-6113B、RU-6115B、RU-6134B、RU-6136B、RU-6138B、RU-6140B、RU-6056、RU-6400B、RU-6401B、RU-6058B、RU-6059B、RU-6060B、RU-6120B、RU-6080B、RU-6120C、RU-6120D、RU-6230B、RU-8190、RU-8191、RU-8192、RU-6080、RU-6081、RU-6520B、RU-6522B、RU-6524B、RU-6526B)  
Client Reference Information (RU-607B、RU-607B-90、RU-605B、RU-6091、RU-8090、RU-6100B、RU-6102B、RU-6103B、RU-6104B、RU-6106B、RU-6107B、RU-6108B、RU-6109B、RU-6113B、RU-6115B、RU-6134B、RU-6136B、RU-6138B、RU-6140B、RU-6056、RU-6400B、RU-6401B、RU-6058B、RU-6059B、RU-6060B、RU-6120B、RU-6080B、RU-6120C、RU-6120D、RU-6230B、RU-8190、RU-8191、RU-8192、RU-6080、RU-6081、RU-6520B、RU-6522B、RU-6524B、RU-6526B)

样品接收日期 2016.07.15  
Sample Received Date Jul. 15, 2016  
样品检测日期 2016.07.15-2016.07.19  
Testing Period Jul. 15, 2016 to Jul. 19, 2016

检测要求 根据客户要求, 对所提交样品中的铅(Pb), 镉(Cd), 汞(Hg), 六价铬(Cr(VI)), 多溴联苯(PBBs), 多溴二苯醚(PBDEs)进行测试。  
Test Requested As specified by client, to test Lead (Pb), Cadmium (Cd), Mercury (Hg), Hexavalent Chromium(Cr(VI)), Polybrominated Biphenyls(PBBs), Polybrominated Diphenyl Ethers(PBDEs) in the submitted sample(s).

检测依据/检测结果 请参见下页。  
Test Method/Test Result(s) Please refer to the following page(s).

主 检 燕程程  
Tested by

审 核 肖佳  
Reviewed by

批 准 刘少蔚  
Approved by

日 期 2016.07.19  
Date



刘少蔚  
技术经理 Technical Manager

No. R177731846

报告专用章  
Centre Testing International Group Co.,Ltd.

广东省深圳市宝安区70区鸿威工业园  
Hongwei Industrial Zone, Bao'an 70 District, Shenzhen, Guangdong, China

# 检测报告 Test Report

报告编号 SCL01I061807003E  
Report No. SCL01I061807003E

第 2 页 共 6 页  
Page 2 of 6

## 检测依据 Test Method

测试项目 Test Item(s)	测试方法 Test Method	测试仪器 Measured Equipment(s)
铅(Pb) Lead (Pb)	IEC 62321-5:2013 Ed.1.0	ICP-OES
镉(Cd) Cadmium (Cd)	IEC 62321-5:2013 Ed.1.0	ICP-OES
汞(Hg) Mercury (Hg)	IEC 62321-4:2013 Ed.1.0	ICP-OES
六价铬(Cr(VI)) Hexavalent Chromium(Cr(VI))	IEC 62321:2008 Ed.1 Annex C	UV-Vis
多溴联苯(PBBs) Polybrominated Biphenyls(PBBs)	IEC 62321-6:2015	GC-MS
多溴二苯醚(PBDEs) Polybrominated Diphenyl Ethers(PBDEs)	IEC 62321-6:2015	GC-MS

## 检测结果 Test Result(s)

测试项目 Test Item(s)	结果 Result	方法检出限 MDL
铅(Pb) Lead (Pb)	N.D.	2 mg/kg
镉(Cd) Cadmium (Cd)	N.D.	2 mg/kg
汞(Hg) Mercury (Hg)	N.D.	2 mg/kg
六价铬(Cr(VI)) Hexavalent Chromium (Cr(VI))	N.D.	2 mg/kg

测试项目 Test Item(s)	结果 Result	方法检出限 MDL
<b>多溴联苯(PBBs) Polybrominated Biphenyls(PBBs)</b>		
一溴联苯 Monobromobiphenyl	N.D.	5 mg/kg
二溴联苯 Dibromobiphenyl	N.D.	5 mg/kg
三溴联苯 Tribromobiphenyl	N.D.	5 mg/kg
四溴联苯 Tetrabromobiphenyl	N.D.	5 mg/kg
五溴联苯 Pentabromobiphenyl	N.D.	5 mg/kg
六溴联苯 Hexabromobiphenyl	N.D.	5 mg/kg
七溴联苯 Heptabromobiphenyl	N.D.	5 mg/kg
八溴联苯 Octabromobiphenyl	N.D.	5 mg/kg
九溴联苯 Nonabromobiphenyl	N.D.	5 mg/kg
十溴联苯 Decabromobiphenyl	N.D.	5 mg/kg

# 检测报告 Test Report

报告编号 SCL01I061807003E  
Report No. SCL01I061807003E

第 3 页 共 6 页  
Page 3 of 6

测试项目 Test Item(s)	结果 Result	方法检出限 MDL
<b>多溴二苯醚 (PBDEs) Polybrominated Diphenyl Ethers(PBDEs)</b>		
一溴二苯醚 Monobromodiphenyl ether	N.D.	5 mg/kg
二溴二苯醚 Dibromodiphenyl ether	N.D.	5 mg/kg
三溴二苯醚 Tribromodiphenyl ether	N.D.	5 mg/kg
四溴二苯醚 Tetrabromodiphenyl ether	N.D.	5 mg/kg
五溴二苯醚 Pentabromodiphenyl ether	N.D.	5 mg/kg
六溴二苯醚 Hexabromodiphenyl ether	N.D.	5 mg/kg
七溴二苯醚 Heptabromodiphenyl ether	N.D.	5 mg/kg
八溴二苯醚 Octabromodiphenyl ether	N.D.	5 mg/kg
九溴二苯醚 Nonabromodiphenyl ether	N.D.	5 mg/kg
十溴二苯醚 Decabromodiphenyl ether	N.D.	5 mg/kg

测试样品/部位描述 透明液体  
Tested Sample/Part Description Transparent liquid

备注: 对于检测铅, 镉, 汞之样品已完全溶解。

-N.D. = 未检出 (小于方法检出限)

-mg/kg = ppm = 百万分之一

**Remark: The sample(s) had been dissolved totally tested for Lead, Cadmium, Mercury.**

-MDL = Method Detection Limit

-N.D. = Not Detected (<MDL)

-mg/kg = ppm = parts per million

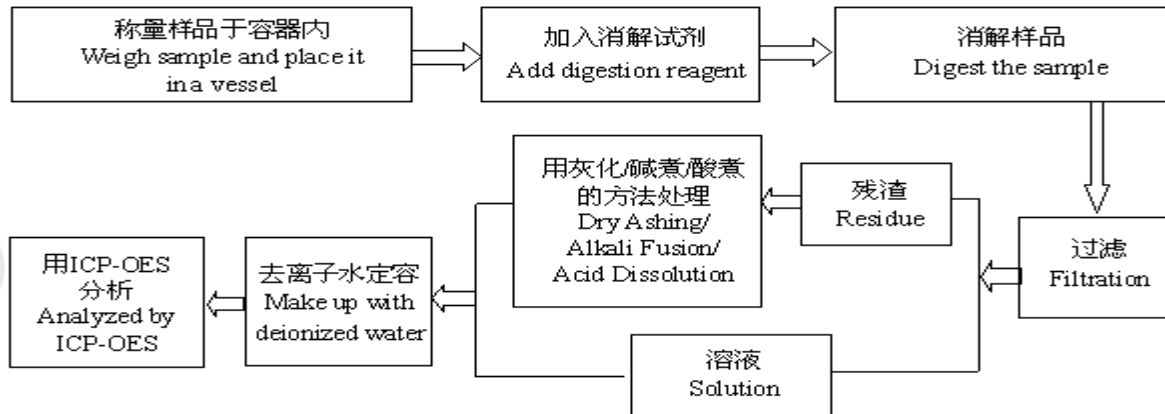
# 检测报告 Test Report

报告编号 SCL01I061807003E  
Report No. SCL01I061807003E

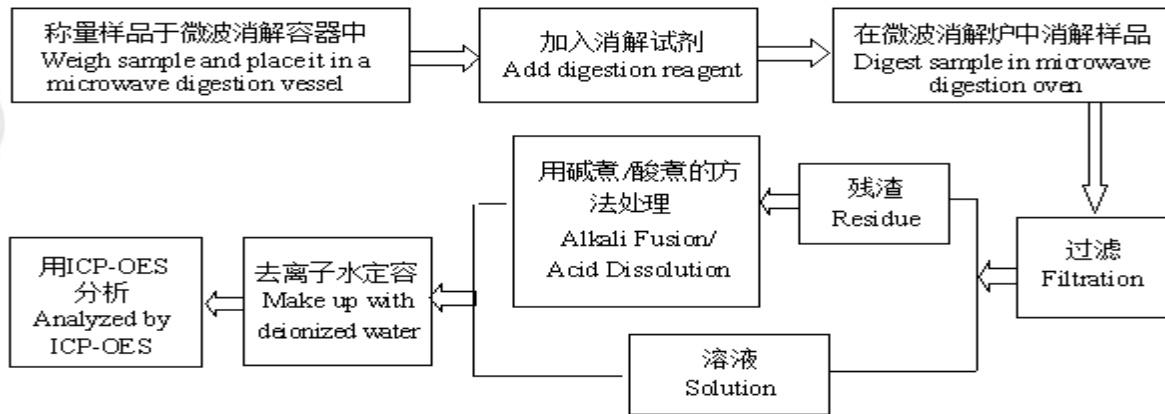
第 4 页 共 6 页  
Page 4 of 6

## 检测流程 Test Process

### 1. 铅(Pb), 镉(Cd) Lead (Pb), Cadmium (Cd)



### 2. 汞(Hg) Mercury (Hg)

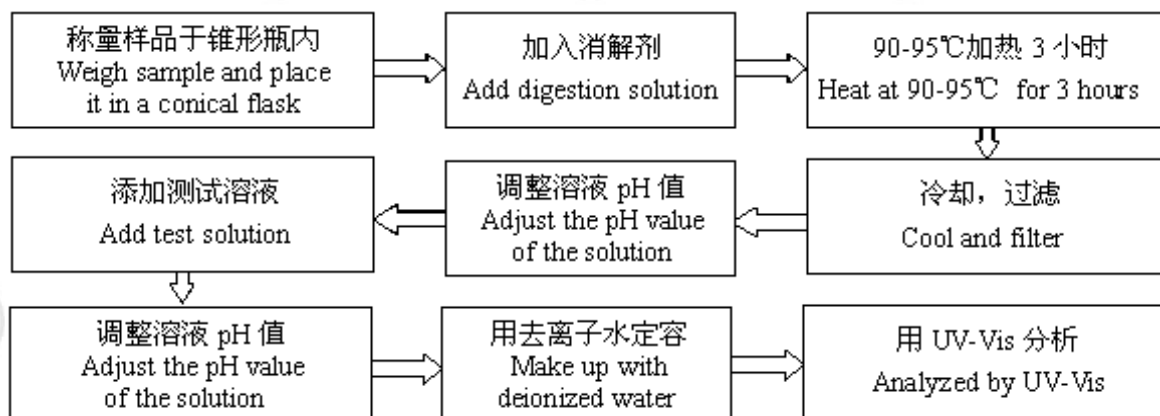


# 检测报告 Test Report

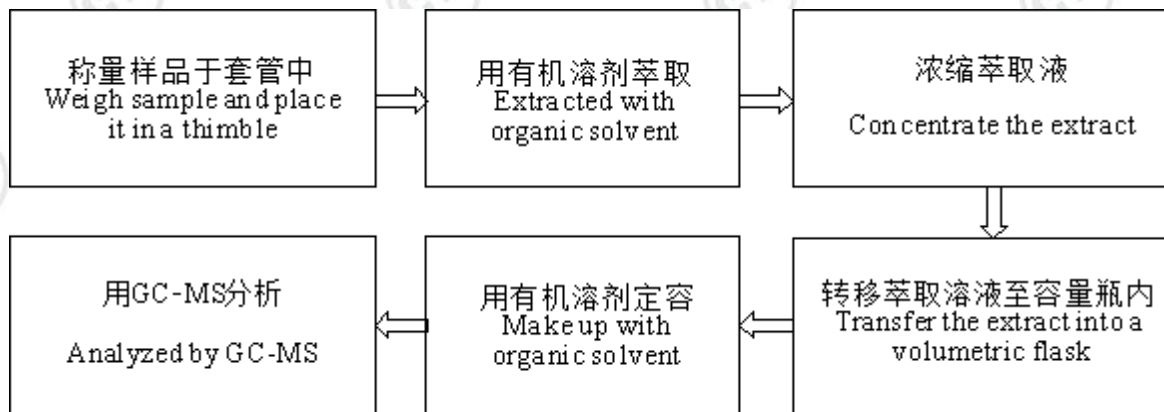
报告编号 SCL01I061807003E  
Report No. SCL01I061807003E

第 5 页 共 6 页  
Page 5 of 6

### 3. 六价铬(Cr(VI)) Hexavalent Chromium(Cr(VI))



### 4. 多溴联苯(PBBs), 多溴二苯醚(PBDEs) Polybrominated Biphenyls(PBBs), Polybrominated Diphenyl Ethers(PBDEs)

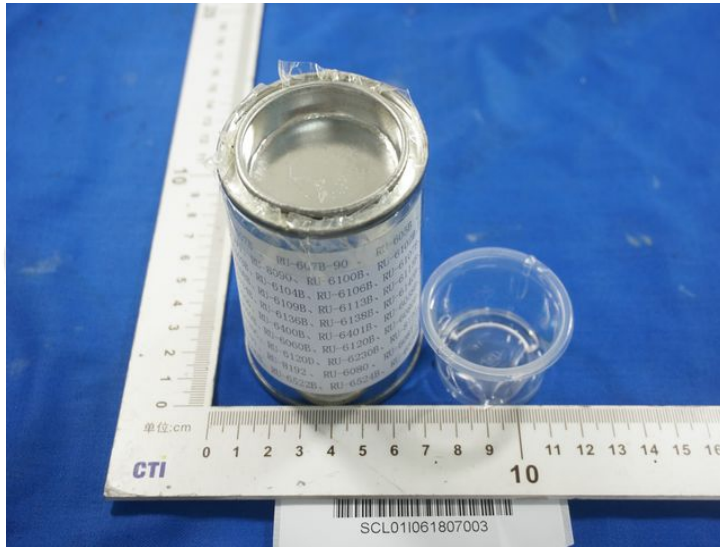


# 检测报告 Test Report

报告编号 SCL01I061807003E  
Report No. SCL01I061807003E

第 6 页 共 6 页  
Page 6 of 6

## 样品图片 Photo(s) of the sample(s)



\*\*\*报告结束\*\*\*  
\*\*\* End of report \*\*\*

检测报告无批准人签字及加盖公司报告章无效，本报告检测结果仅对受测样品负责。未经CTI书面同意，不得部分复制本报告。

The test report is effective only with both signature and specialized stamp. The result(s) shown in this report refer only to the sample(s) tested. Without written approval of CTI, this report can't be reproduced except in full.